



CSCS

Centro Svizzero di Calcolo Scientifico
Swiss National Supercomputing Centre

ETH zürich



December CHIPP @ CSCS Review

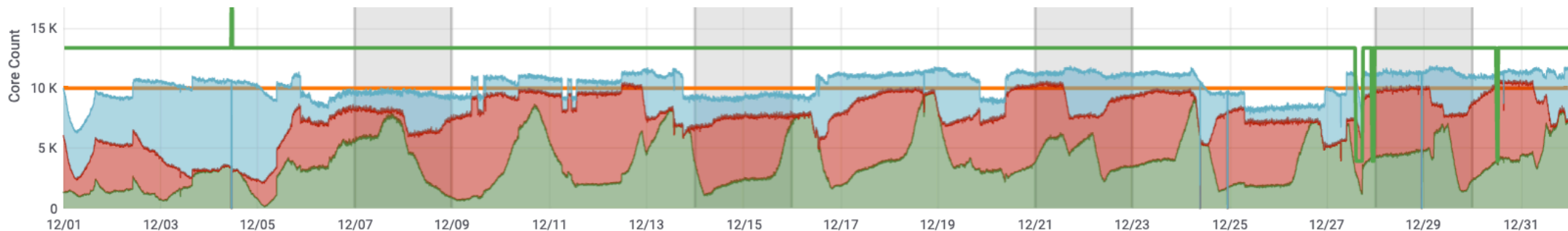
Nicholas P. Cardo, CSCS

January 9, 2020

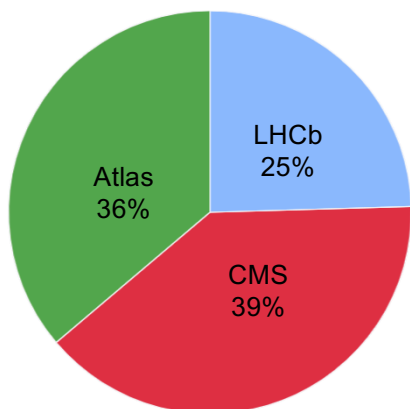
Activities

- In Plan:
 - Refresher on dashboard
 - Send me your questions/confusions to help me prepare
 - *Nothing has been received*
- Maintenance Schedule:
 - **January 29th, 2020 (07:00-20:00)**
 - May 13th, 2020
 - September 9th, 2020
- Clarification:
 - For a maintenance, at the request of the VOs, we run jobs up to the end and then kill them. Do these get recorded as job errors?
 - *No responses have been received*

December Monthly Utilization

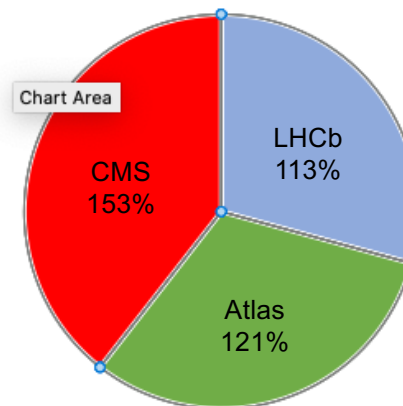


	max	avg	current
Pledges	10.03 K	10.03 K	10.03 K
atlas	9.94 K	3.81 K	6.97 K
cms	8.46 K	3.90 K	177
lhcb	8.06 K	2.59 K	4.28 K
Capacity	21.90 K	13.34 K	13.40 K



Percent of Hours

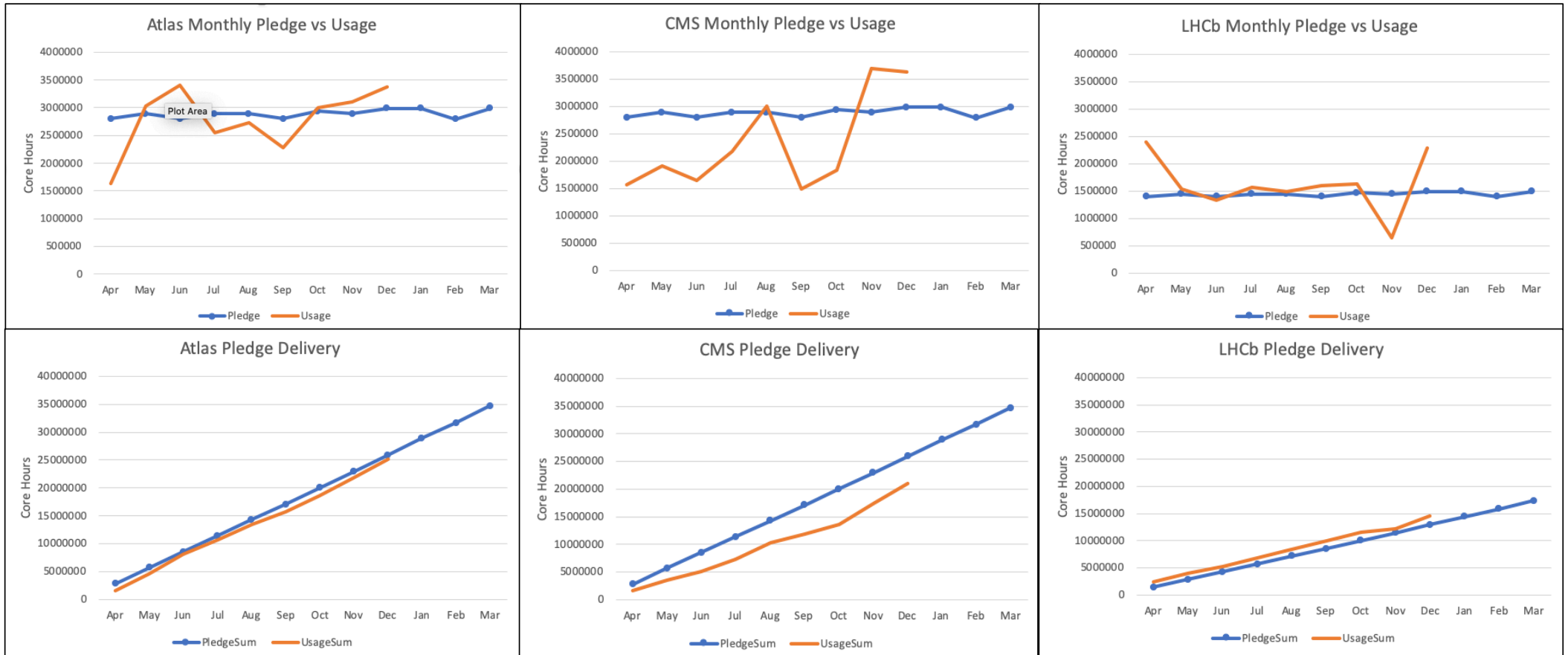
	Core Hours
Atlas	3,380,096
CMS	3,622,561
LHCb	562,027



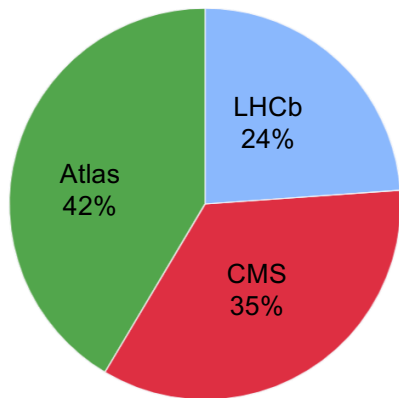
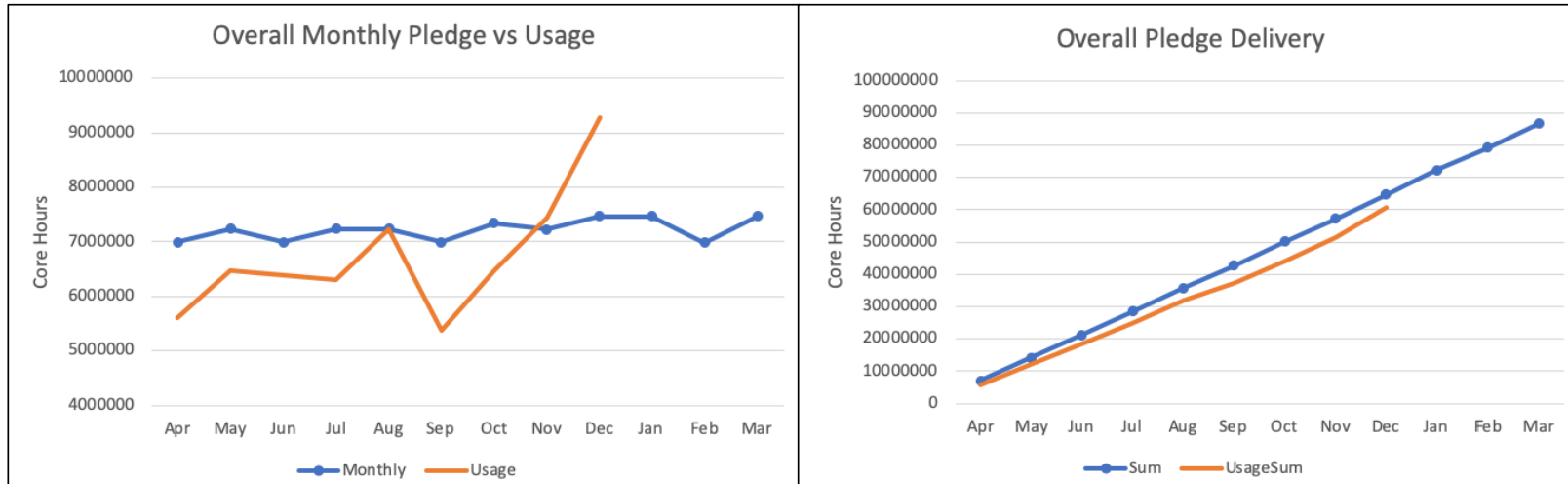
Percent of Pledge

Overall: 124%

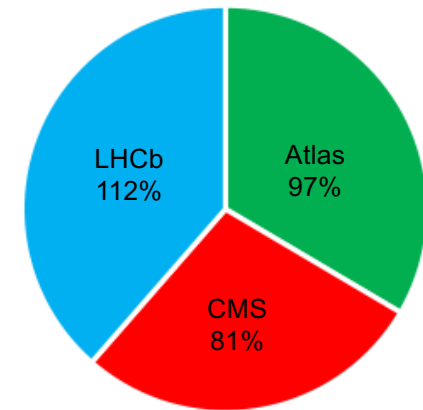
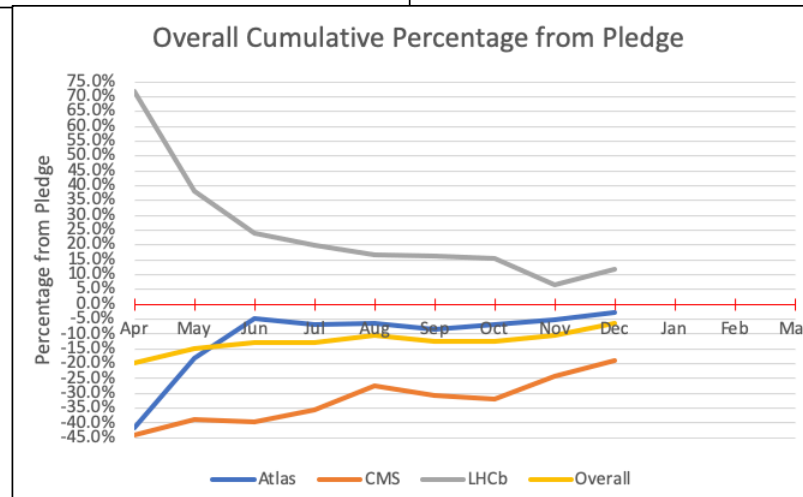
April 1, 2019 through December 31, 2019 VO Utilization



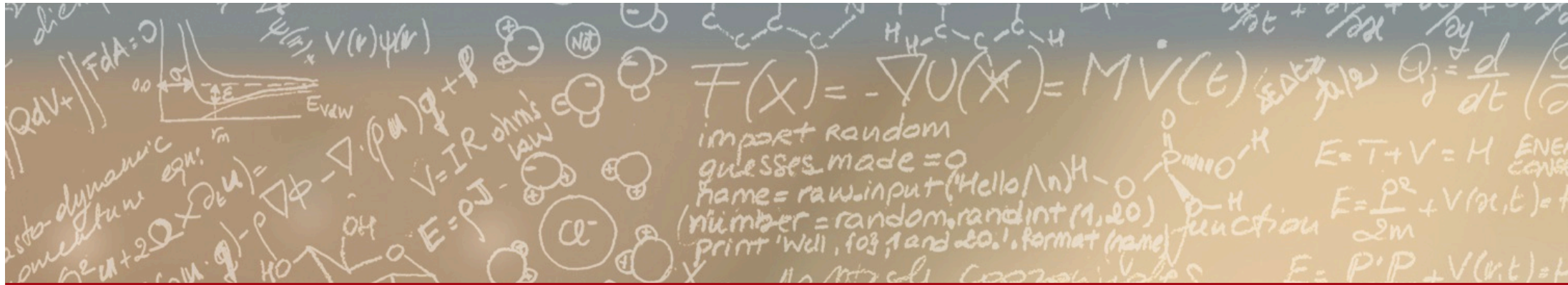
CHIPP Progress on Pledge Delivery



Percent of Hours



Percent of Pledge



Thank you for your attention.