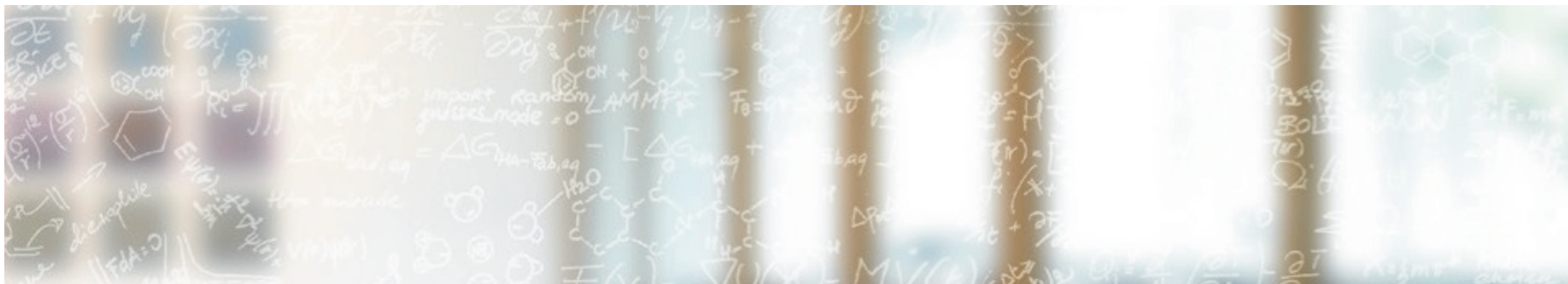




CSCS

Centro Svizzero di Calcolo Scientifico
Swiss National Supercomputing Centre

ETH zürich



June CSCS Site Report for CHiPP

Nicholas P. Cardo, CSCS

July 9, 2020

WLCG SAM

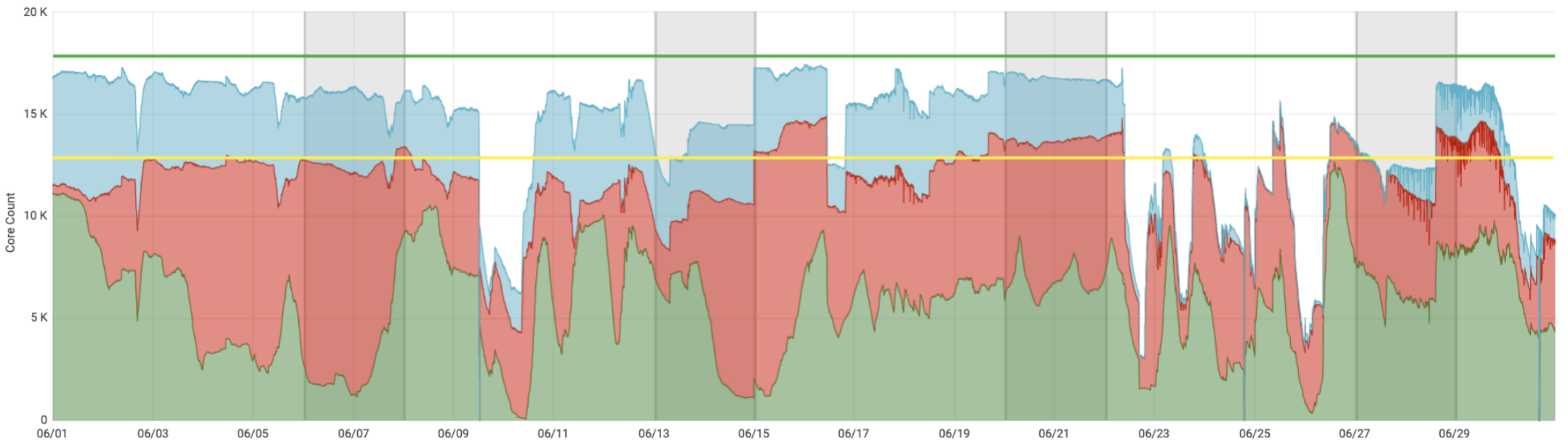
Site	WLCG Availability												Average	Site
	April	May	June	July	August	September	October	November	December	January	February	March		
CH-CHIPP-CSCS (CMS)	100%	72%	100%										90.7%	CH-CHIPP-CSCS (CMS)
CH-CHIPP-CSCS (ATLAS)	98%	86%	77%										87.0%	CH-CHIPP-CSCS (ATLAS)
CSCS-LCG2 (ATLAS)	100%	74%	99%										91.0%	CSCS-LCG2 (ATLAS)
UNIBE-LHEP (ATLAS)	96%	98%	54%										82.7%	UNIBE-LHEP (ATLAS)
CH-CHIPP-CSCS (LHCb)	78%	78%	99%										85.0%	CH-CHIPP-CSCS (LHCb)

Site	WLCG Reliability												Average	Site
	April	May	June	July	August	September	October	November	December	January	February	March		
CH-CHIPP-CSCS (CMS)	100%	91%	100%										97.0%	CH-CHIPP-CSCS (CMS)
CH-CHIPP-CSCS (ATLAS)	98%	96%	77%										90.3%	CH-CHIPP-CSCS (ATLAS)
CSCS-LCG2 (ATLAS)	100%	94%	99%										97.7%	CSCS-LCG2 (ATLAS)
UNIBE-LHEP (ATLAS)	96%	98%	54%										82.7%	UNIBE-LHEP (ATLAS)
CH-CHIPP-CSCS (LHCb)	78%	99%	99%										92.0%	CH-CHIPP-CSCS (LHCb)

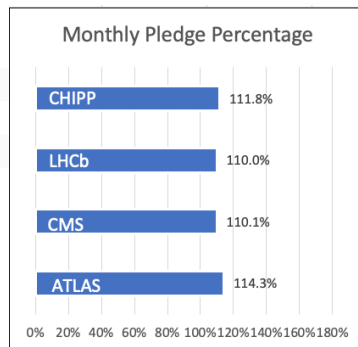
<30% <60% <90% >=90% [Source: http://monit-wlcg-sitemon.web.cern.ch/monit-wlcg-sitemon/reports/2020](http://monit-wlcg-sitemon.web.cern.ch/monit-wlcg-sitemon/reports/2020)

June Monthly Utilization

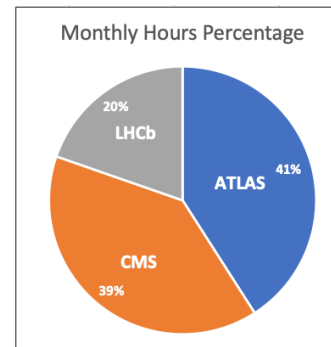
Running Core Count per Account (atlas + cms + lhcb) and partitions (wlcg + wlcg1)



- atlas
- cms
- lhcb
- Capacity
- Pledges

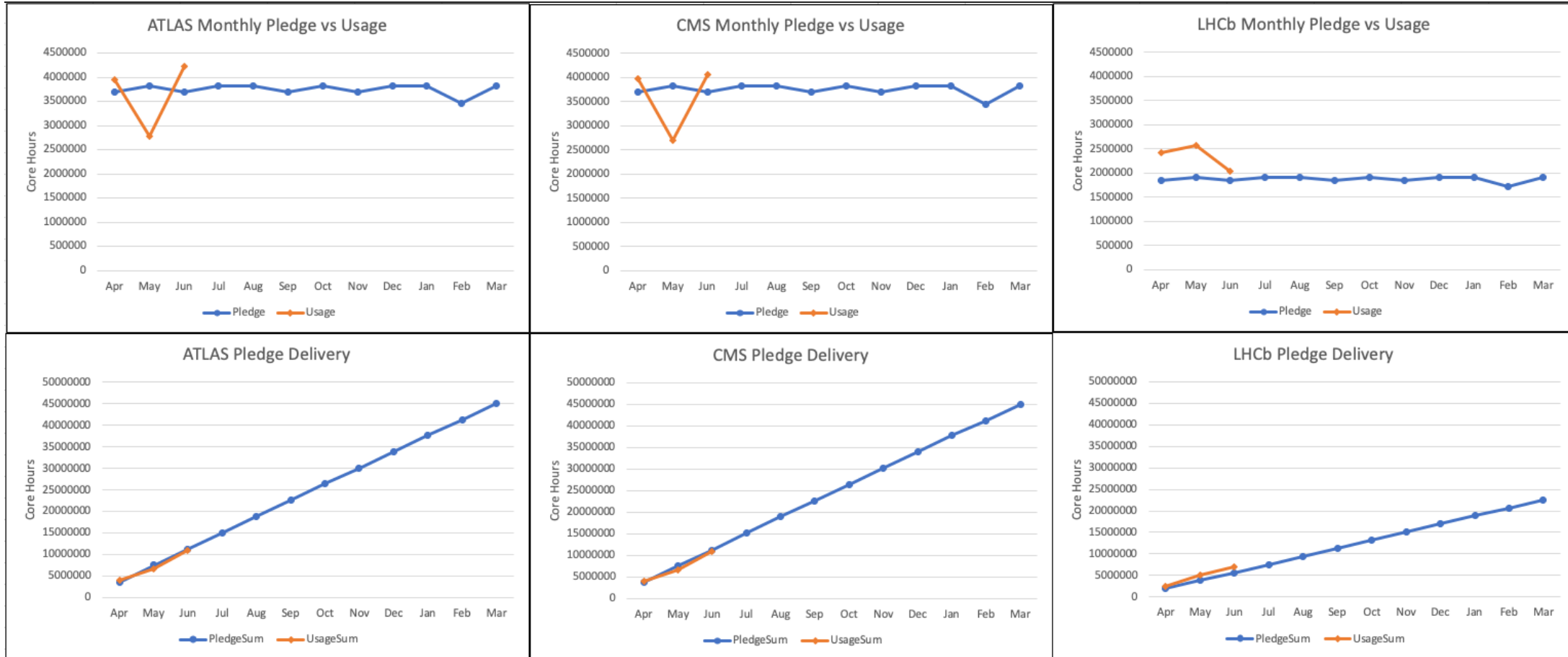


Core Hours	
ATLAS	4'229'800
CMS	4'072'727
LHCb	2'033'804

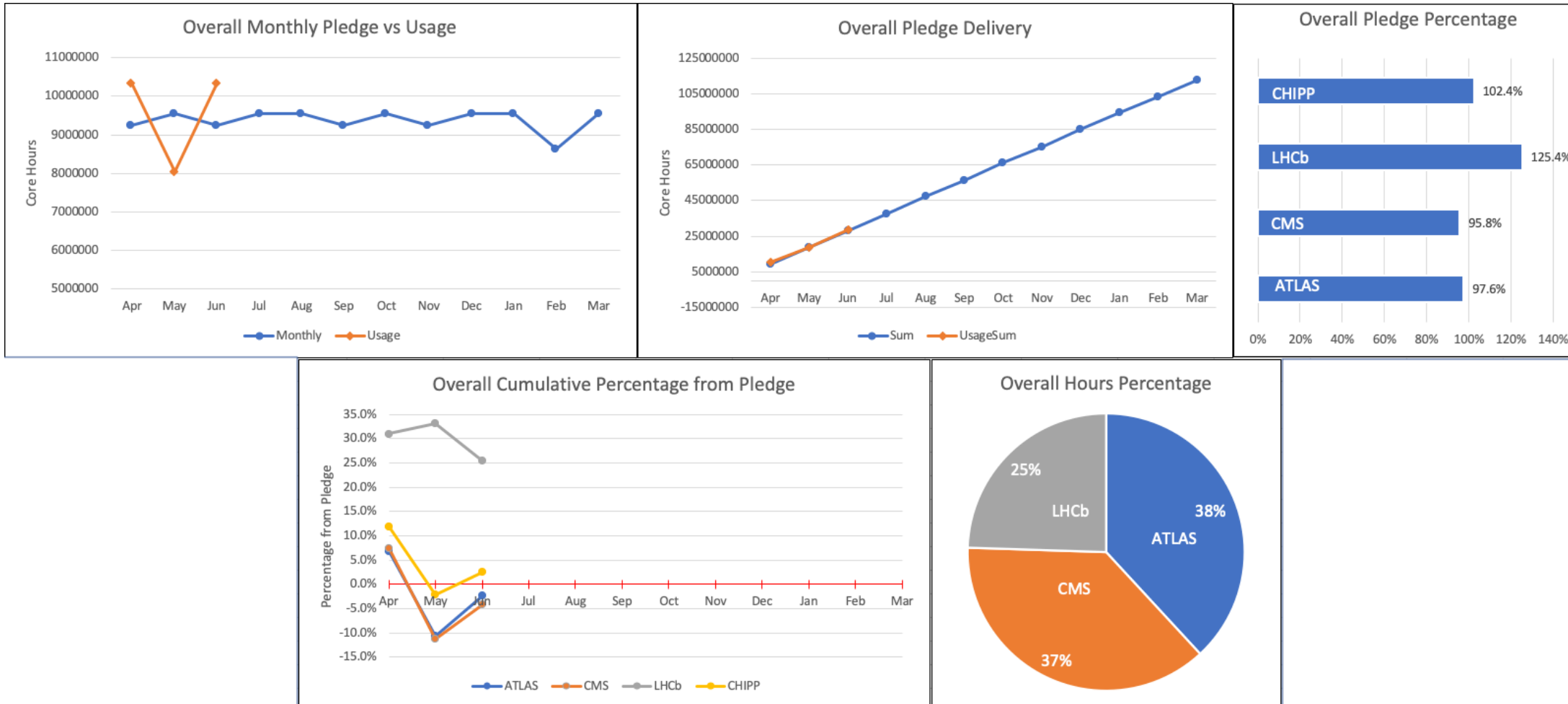


	max	avg	current
atlas	12.63 K	5.81 K	4.32 K
cms	11.94 K	5.66 K	4.51 K
lhcb	6.07 K	2.81 K	1.26 K
Capacity	17.82 K	17.82 K	17.82 K
Pledges	12.84 K	12.84 K	12.84 K

April 1, 2020 through March 31, 2021 VO Utilization



CHIPP Progress on Pledge Delivery



Notices

- **2020 Maintenance Schedule:**
 - August 12th, 2020 Daint Maintenance
 - September 9th, 2020 – Site Wide

- **July Holidays:**
 - None

- **37 Node Temporary Capacity Increase**
 - CHiPP Overall back on track at 102.4%
 - Nodes will remain a little longer due to recent filesystem issue

Completed Activities

- **Native GPFS (eliminates DVS)**
 - Conversion complete
- **ARC Upgrade to V6**
 - Complete

In Progress Activities

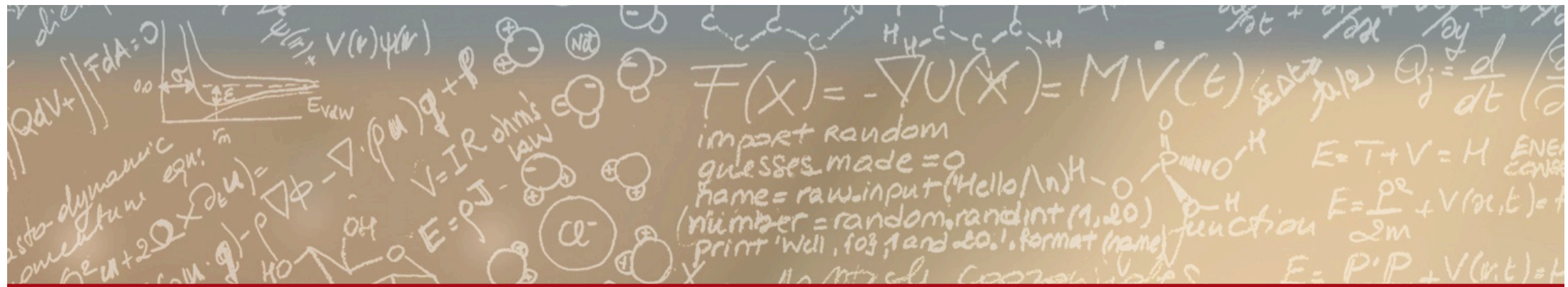
- **New Accounting System Data Verification:**
 - Performing monthly verification
 - Question: Are the jobs that are run on the TDS (arc06) included in the wlcg accounting?
 - These are not included in the site reported numbers (possible area of discrepancy)

Activities Backlog

- **Enable "Nice" Settings**
 - Blocked: Waiting for go ahead from ATLAS
- **Reservations:**
 - Blocked: Waiting on CHiPP guidance to proceed/adjust/abandon
- **Single ARC CE:**
 - Blocked: ARC 6 upgrades
- **ARC CE Log Access:**
 - Pending: Investigation
- **ARC CE State Counts (for ARC v6):**
 - Pending: Work
 - Blocked: ARC Upgrade
- **ARC Configuration on Wiki**
 - Blocked: Requires Wiki login access

Recent Outage

- **Storage system failure for CHiPP scratch**
 - resulted in a corrupted filesystem
 - required filesystem rebuild
- **37 bonus node will remain in the capacity for a bit longer**
 - Originally to be removed beginning of July
 - Will monitor to make sure deliverables (hours) remain on track
 - Can be removed live, without impact



Thank you for your attention.